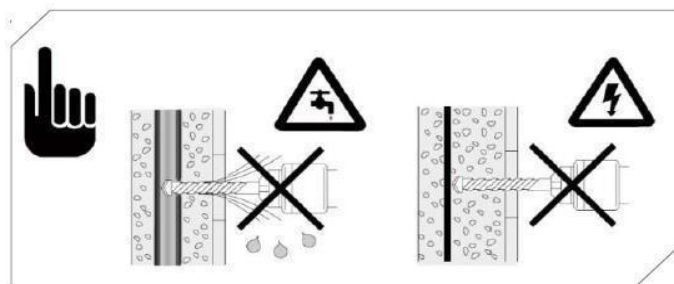
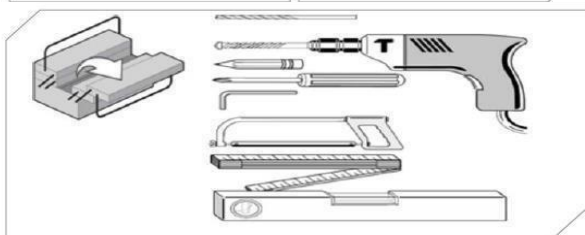
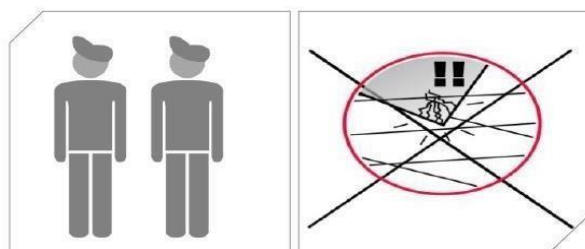


INSTALLATION INSTRUCTION

SHOWER CABIN

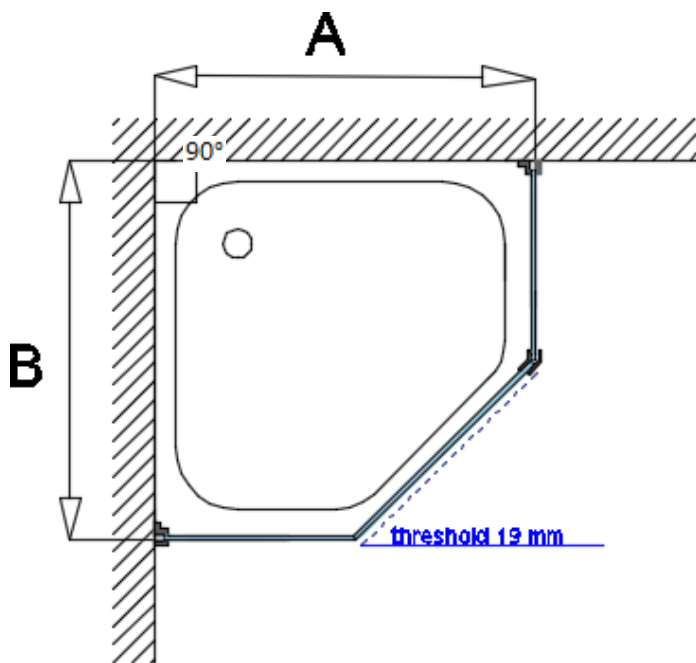
NIDA

It is necessary to make sure before installation that electricity or water fittings in the walls, floors or outdoors will not be damaged because you are responsible for their defect. It is necessary to clean the installation place and glasses before installation using a standard glass cleaner. Only the sanitary silicone may be used for installation. The glass products contained in the package have to be protected against direct contact with tiles or ceramics. When they are unpacked, they can be put on the carton or inserted into U-profiles held in the set. When the glass is erected, sudden or strong movements should be avoided. All the installation works have to be carried out consistently, following the instruction, so that the product would be qualitative in the end and so that the shower enclosure would be hermetic. All the dimensions are indicated in millimeters

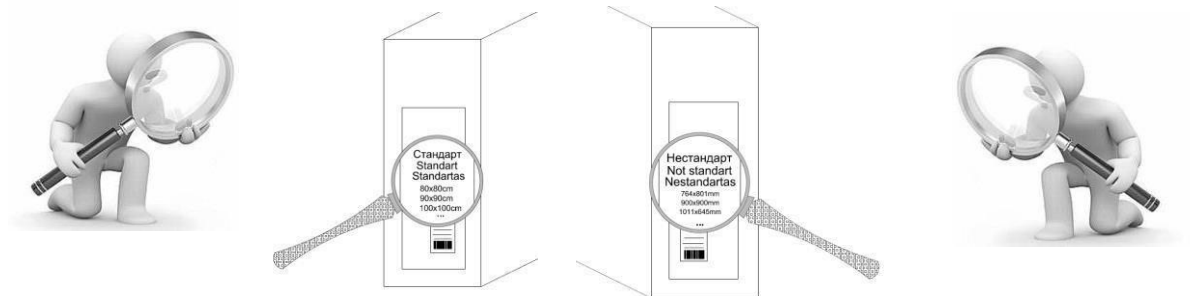
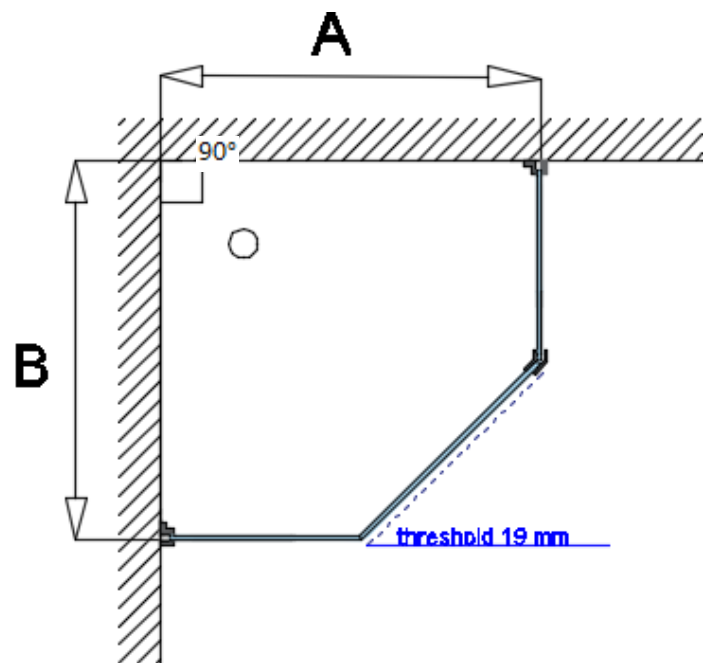


UAB BALTIJOS BRASTA
Palemono g. 7B, LT-52158 Kaunas, Lietuva
Tel. + 370 37 45 70 21 Faks. + 370 37 45 37 32
El. p. info@baltijosbrasta.lt
www.baltijosbrasta.lt

STANDARD SHOWER CABIN



NON-STANDARD SHOWER CABIN



Dimensions of standard shower cabin: Possible dimensions of non-standard shower cabin:

1. A=783-788mm; B=783-788mm

2. A=883-888mm; B=883-888mm

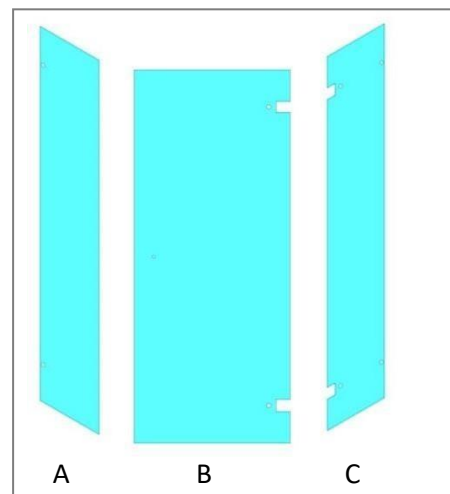
3. A=983-988mm; B=983-988mm

1. A=700mm...1000mm

B=700mm...1000mm

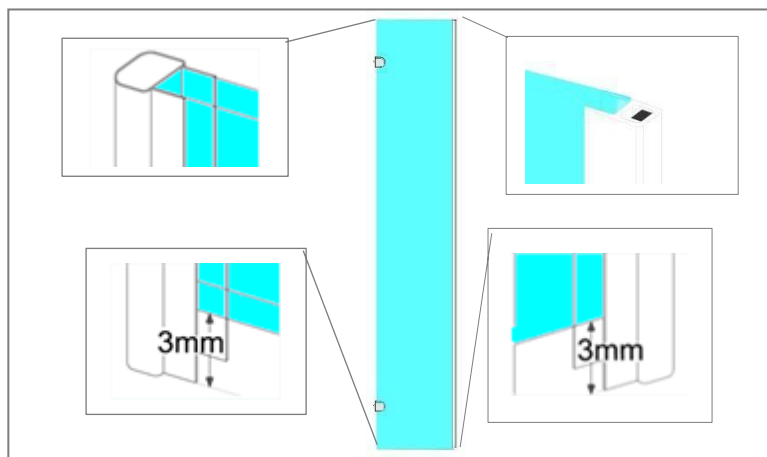
1

**Shower cabin is composed of three glass – A, B and C.
Installation work will begin on the glass 'A'.**



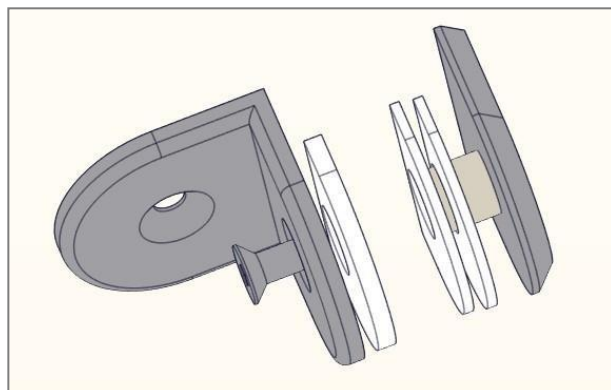
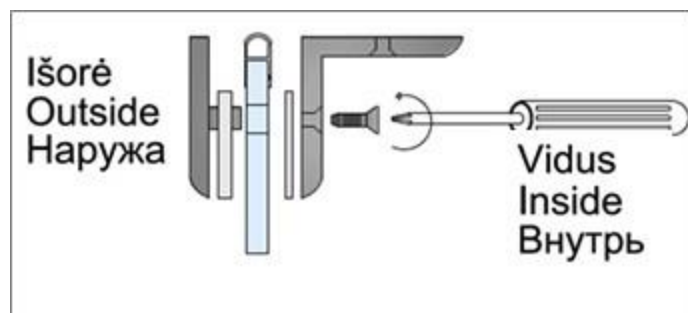
2

Put the magnet and wall gaskets on the glass 'C' as indicated. The top has to be even with the glass and on the bottom it should be 3 mm longer than the glass height.



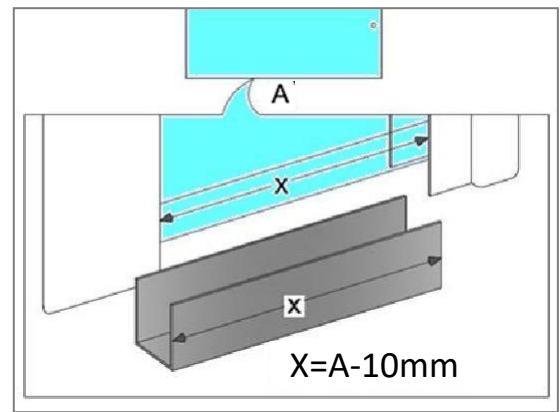
3

To the glass screw on the wall mounting bracket, as indicated in the figure. Pay attention to the gaskets formation - thicker gasket must be on the outside of the cab.



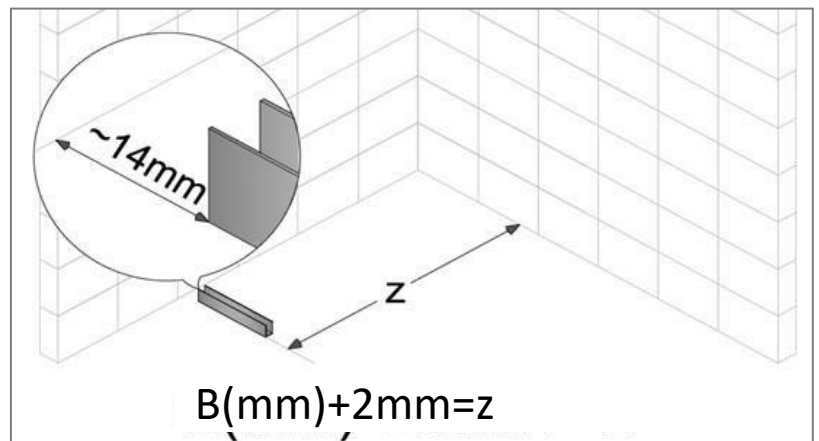
4

Put the 'U' shaped profile on the glass bottom. It can calculate the length of the "clean" glass "A" dimension minus 10 mm or by measuring the distance between the intermediate glass. **WARNING:** the cut the required length profile has not attach to the glass



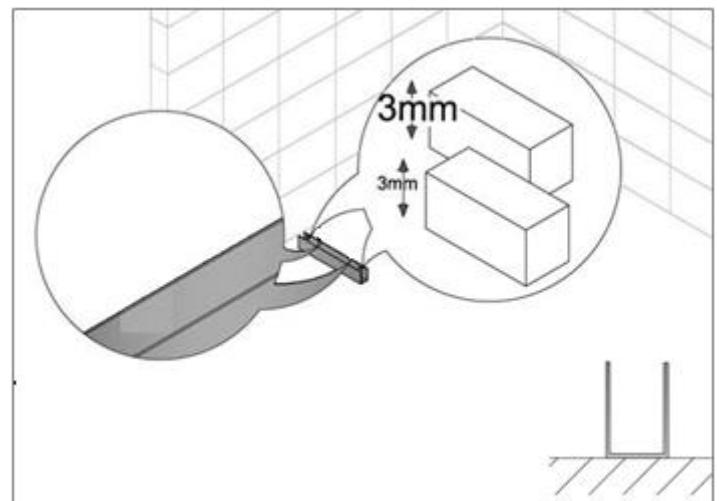
5

With level help mark the fixing places for 'U' profile. Calculate the distance from the main dimension A (mm) plus 2 mm. Distract the 'U' profile from the wall 14mm.



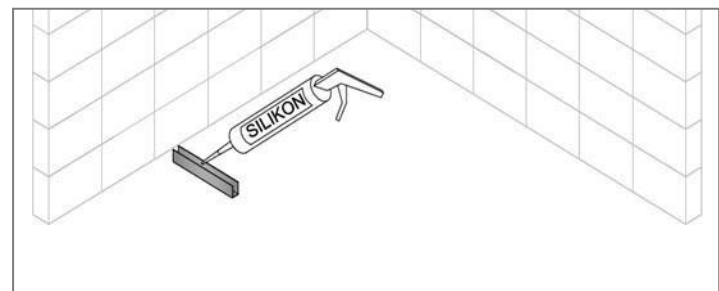
6

"U" shaped profile attach it to the floor. Drill 4 mm holes, insert and screw on pins. To the profile put two 3mm thick gaskets, that the glasstoprevent any direct contact with the screws.



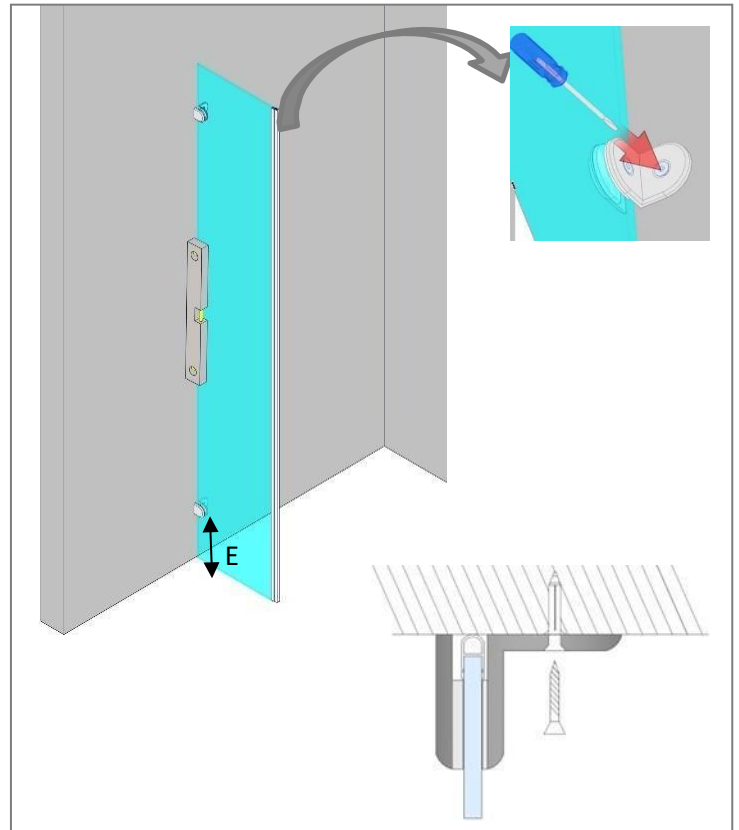
7

Smear silicone to the inside of the "U" profile.



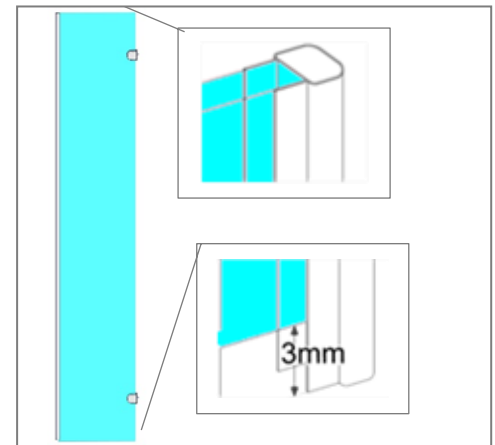
8

Insert the glass in the "U" profile. Drill 6mm holes in the wall. To the wall fasten the wall mounting bracket from the inside. Do not mix the glass top with the bottom of the glass, at the bottom distance from the hole center to the bottom of the glass to be ~187mm. **ATTENTION:** Before approval, it is necessary to align the wall with a spirit level.



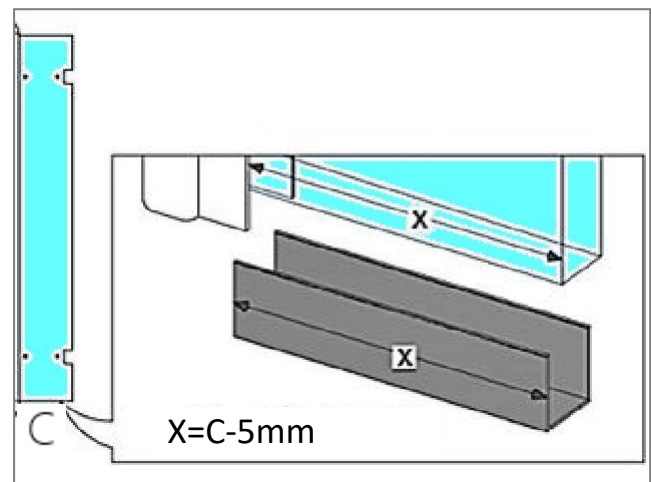
9

Continue with glass. glass "C". Put the wall gasket as shown in the figure. Gasket above must be equal to the glass and the bottom 3 mm longer.

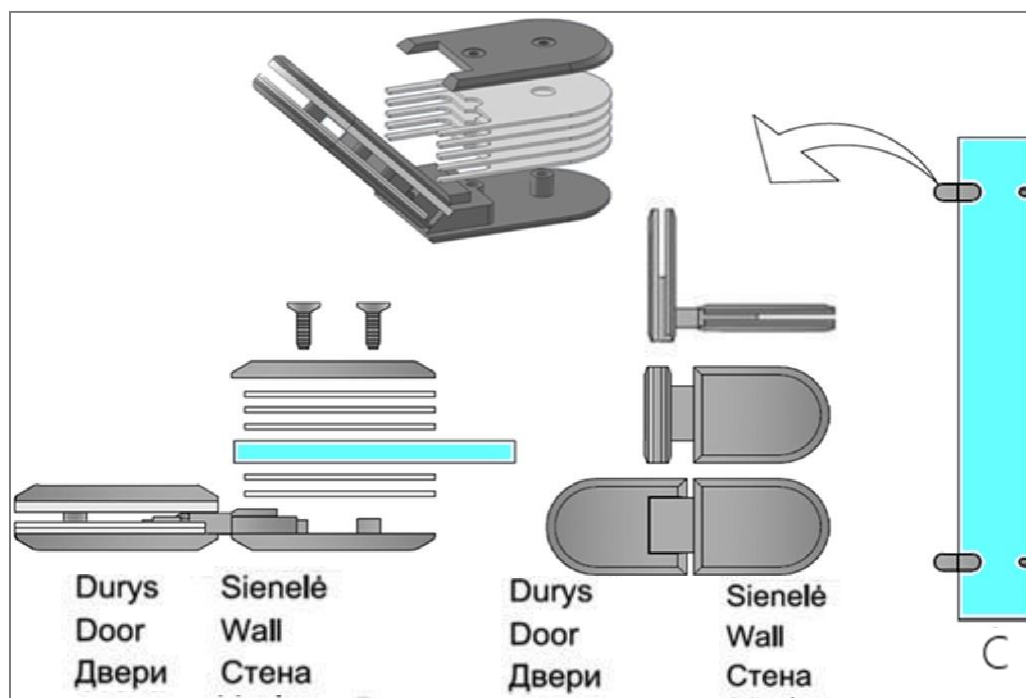


10

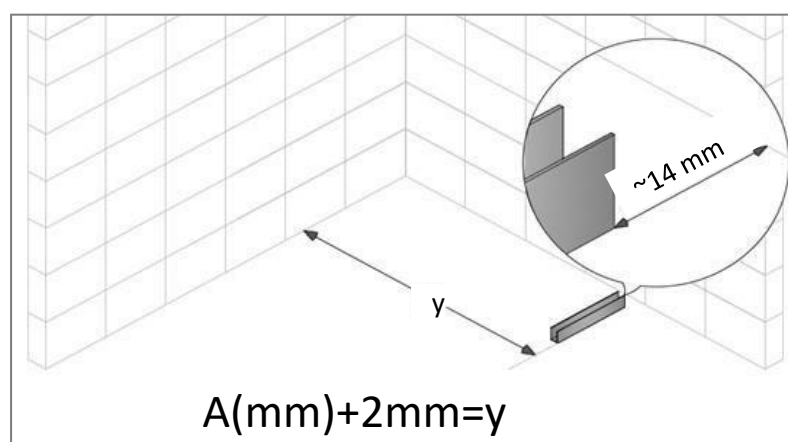
Put the 'U' shaped profile on the glass bottom. It can calculate the length of the "clean" glass "C" dimension minus 5 mm or by measuring the distance between the intermediate glass. **WARNING:** the cut the required length profile has not attach to the glass.



The glass screw the wall mounting bracket as indicated in point 3. Pay attention to the gaskets - thicker gasket must be on the outside of the cab. Later screw flexible. It is necessary to pay attention to the gaskets arrangement - three gaskets in the internal side of the cab and two outside. The hinge side which is a spindle fixed to the wall and the hinge side, which opening and closing on the shaft, will then be affixed to the door glass.

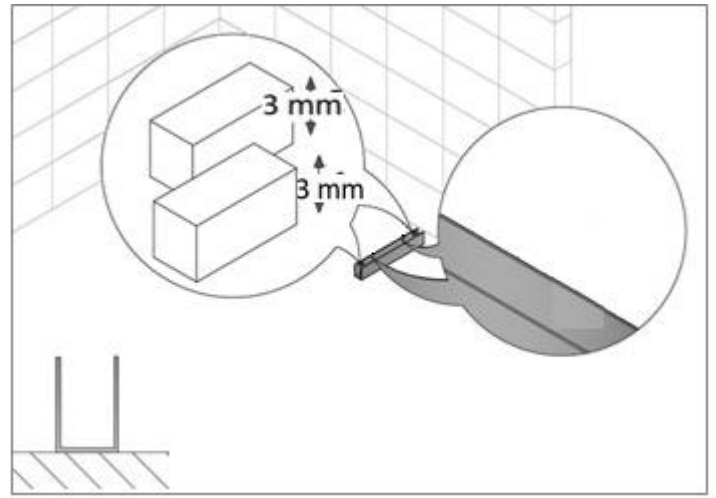


With level help mark the fixing places for 'U' profile. Calculate the distance from the main dimension B (mm) plus 2 mm. Distract the 'U' profile from the wall 14mm.



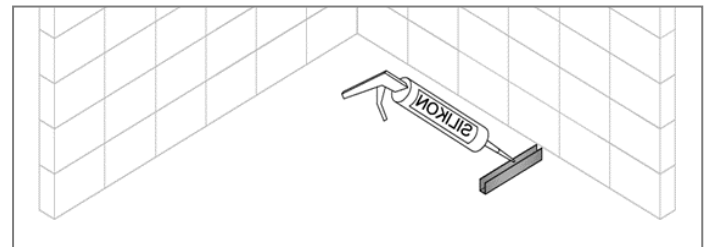
13

"U" shaped profile attach it to the floor. Drill 4 mm holes, insert and screw on pins. To the profile put two 3 mm thick gaskets, that the glass to prevent any direct contact with the screws.



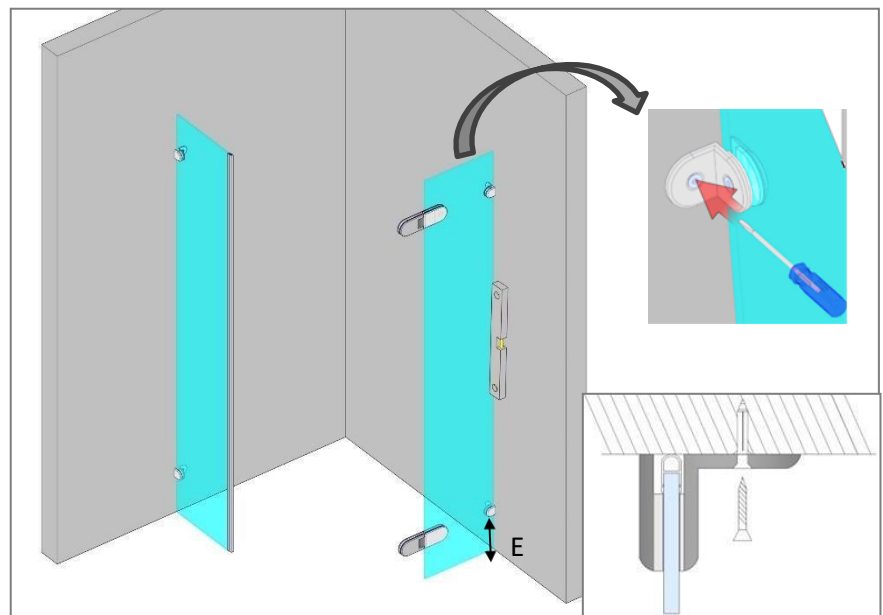
14

Smear silicone to the inside of the "U" profile.



15

Insert the glass in the "U" profile. Drill 6mm holes in the wall. To the wall fasten the wall mounting bracket from the inside. Do not mix the glass top with the bottom of the glass, at the bottom distance from the hole center to the bottom of the glass to be ~ 187mm. ATTENTION: Before approval, it is necessary to align the wall with a spirit level.



16

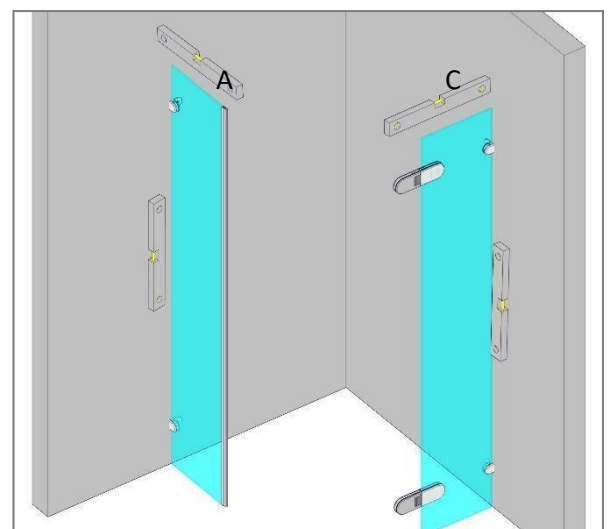
The help of a spirit level to make sure that the glass is at the same height. If the opposite is true, you can adjust the cabin U-profile:



A

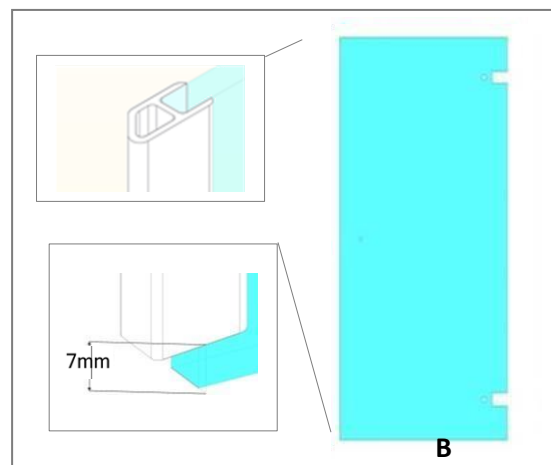


C



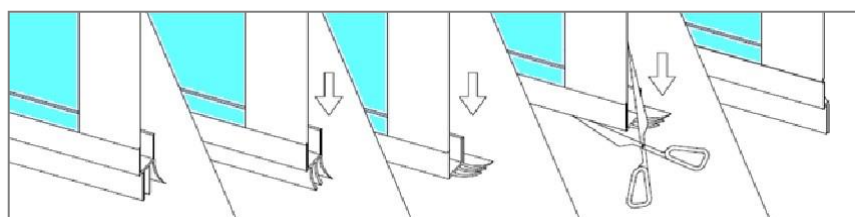
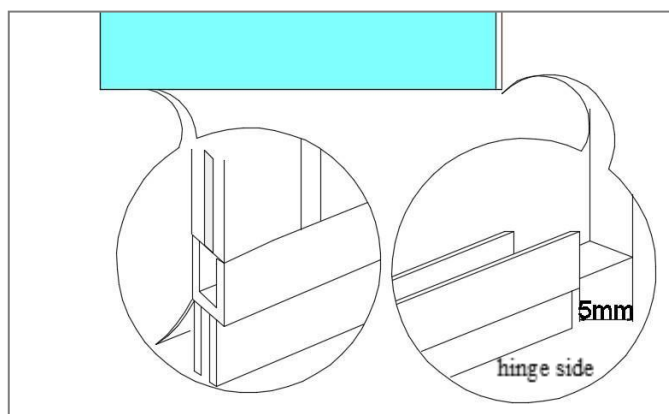
17

Continue with glass 'B'. Put the magnets on the doors as indicated. The top has to be even with the glass and on the bottom it should be 7mm shorter than the glass' height.



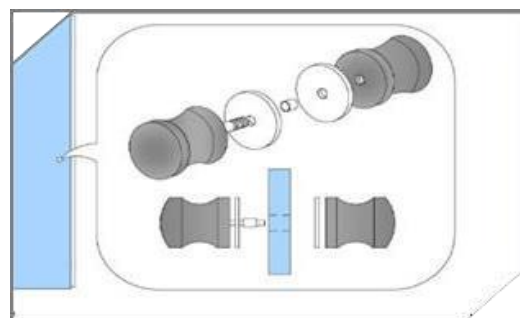
18

Put the lower gasket of the doors as indicated. Cut it according to the magnet's form. The easiest way is to press down the put gasket and to cut it according to the magnet's form.

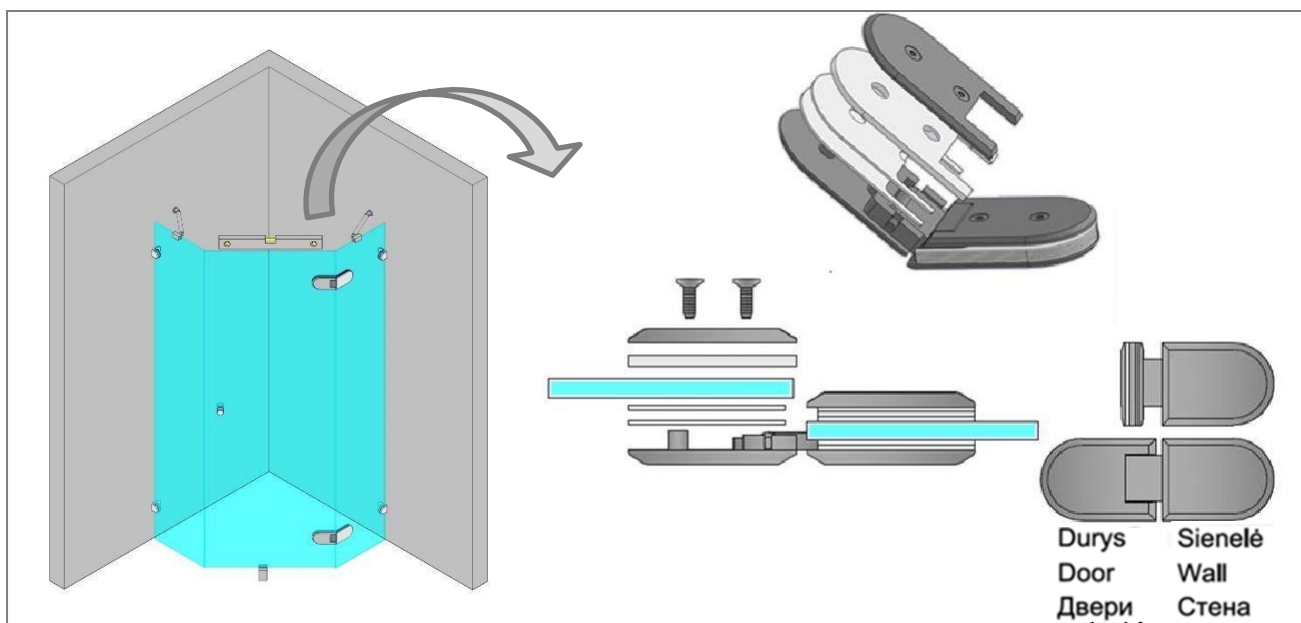


19

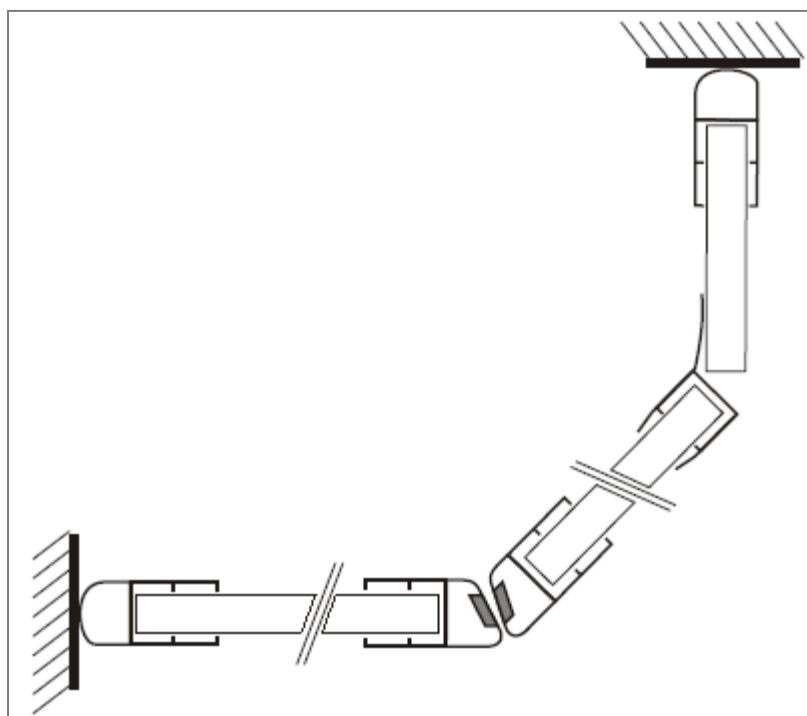
Screw the handle on. The layout of gaskets has to be taken into account: one gasket on each side of the glass and a small gasket in the hole.



Door fixing to flexible. Before installation, it is necessary to pay attention to the gaskets: tight gasket in the inner side of the cab, two thin intermediate in the outer side of the cab.



ATTENTION: flexible can be tightened only when the help of a spirit level to align the top of the glass and make sure that the levels of grip magnetic gaskets. To align the top will help the support pads. The cab has space to regulation: glass of "A" and "C" has the ability to change the position of the U-profile support. Door glass B is adjustable flexible support: loosen the hinge screws are constricting the door, and change the direction of the door, until achieve the desired position. When the cab glass top at the same height and the magnetic gaskets levels of adhesion, flexibility can be tightened at the door glass.

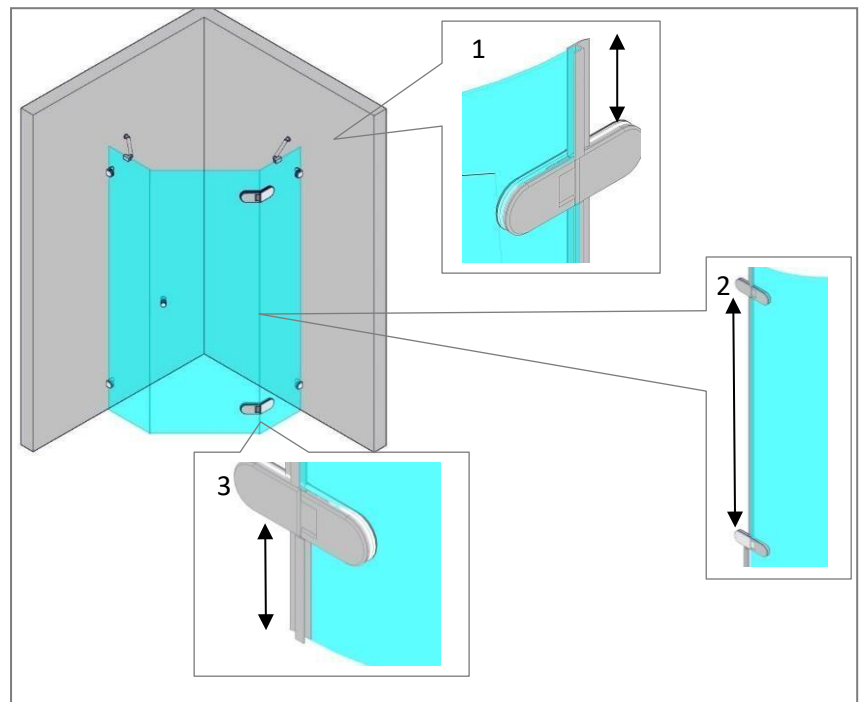
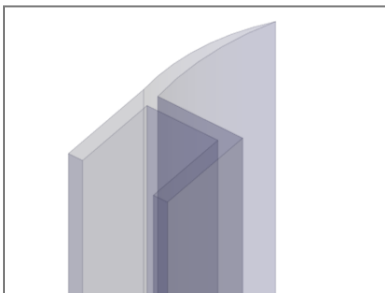


21

Open the door and put the door gasket as indicated.

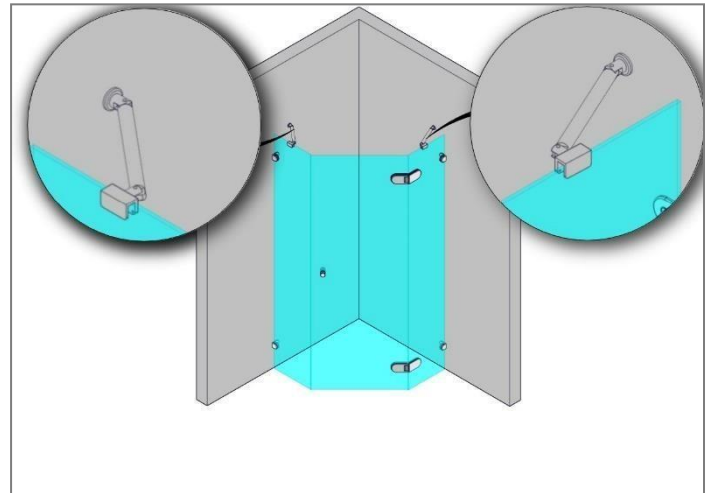
It needs to be cut into three different lengths:

- 1) **on the glass top to the hinge,**
- 2) **from the hinge to hinge and**
- 3) **from the hinge to the floor leaving a gap of 4 mm.**



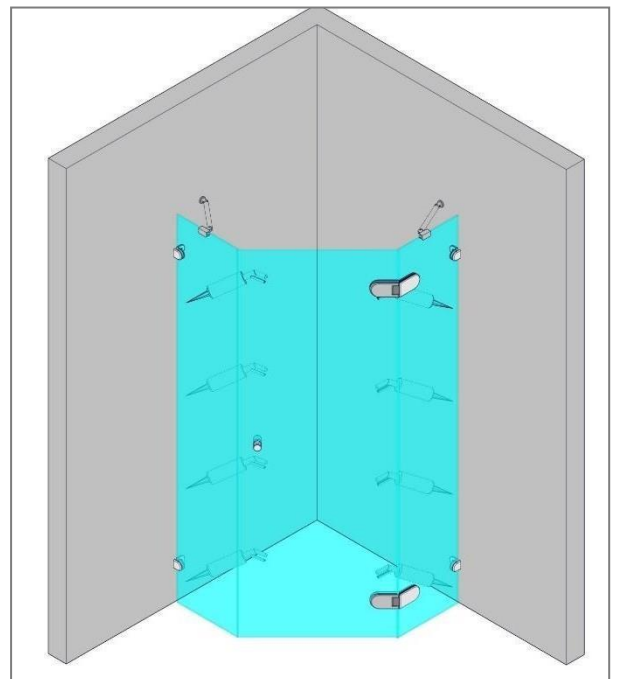
22

Attach the upper cab brackets. First place holder on the part of the glass. Invoked holder tighten with the key. Wall bracket part drill a hole. The distance from the edge of the wall profile to drill holes in the center is 160-180mm. Attach the wall bracket of the screw.



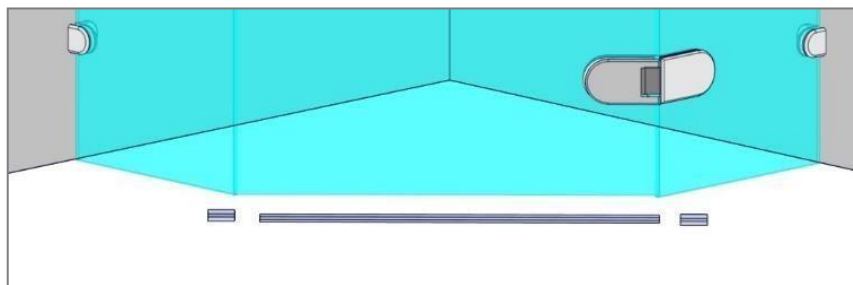
23

Seal collected shower door with silicone from the inside. Do not use the door 24 hours until firms silicone.



24

A measure and cut off the threshold of the needed length. Put the threshold's angles in the ends and glue it on with the help of silicone.



25

Attention! After 24 hours tighten the hinge screws again.

